

# More washer-disinfector than ever before: The MELAG Therminators

MELAtherm 20 / MELAtherm 10 Evolution

**NEW:**  
2 sizes for  
every requirement



# MELAG washer-disinfectors

## Right on trend: Efficient.

Meet MELAtherm – more than just a washer-disinfector, it's your new team member in the decontamination room. MELAtherm takes care of cleaning and disinfection so your team can focus on what matters most – providing exceptional care for your patients. All with greater safety, less effort, and the reassurance your team can count on.



MELAtherm 10 Evolution    MELAtherm 20

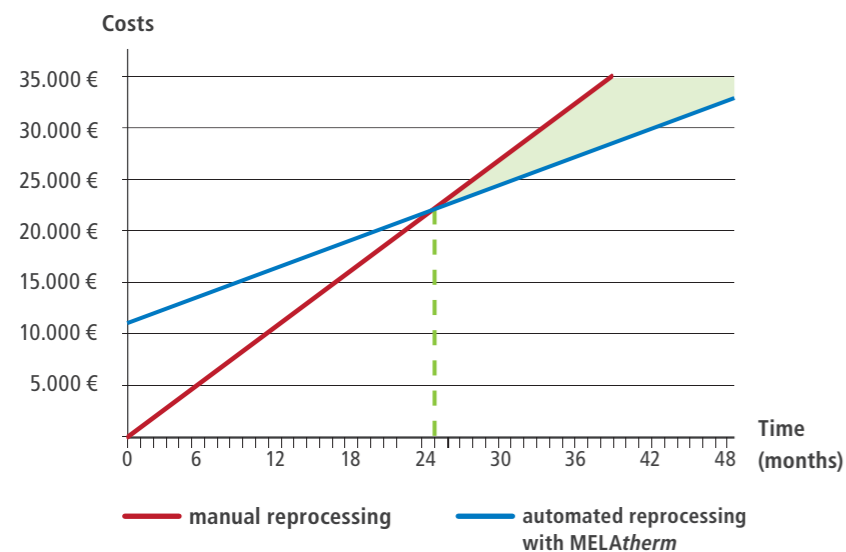
- 
**Efficiency:**  
 Reducing the amount of work involved ensures cost- and time-saving workflows
- 
**Safety:**  
 Improved occupational safety thanks to minimal contact with instruments
- 
**Legal compliance:**  
 Documentation of the reprocessing procedures enables reproducibility
- 
**Process optimization:**  
 Immediate reuse of non-surgical instruments after automated reprocessing (in compliance with national standards).

**Made in Germany. Made for You.**

Future needs heritage: We have been developing, producing and optimizing our system solutions for instrument reprocessing at our headquarters in Berlin for over 70 years. MELAG stands for the art of engineering and production "made in Germany" with the highest levels of quality.



### The use of a MELAtherm pays for itself after only 25 months, assuming the following values:



Number of working days/month	22
Cycles per day	2
Hourly wage for employees	18,50 €
Cost of disinfectant bath	1,80 €
Cost of process media, electricity, water	2,00 €
Working time for manual reprocessing (in hours)	1
Working time for automated reprocessing (in hours)	0,25
Costs per manual reprocessing cycle	<b>20,30 €</b>
Costs per automated reprocessing cycle	<b>6,63 €</b>
Acquisition costs for MELAtherm	11.000,00 €
Interest rate	5,0 %
Maintenance/service/validation per month	100,00 €

Costs per month for manual reprocessing	<b>893,20 €</b>
Costs per month for automated reprocessing	<b>437,33 €</b>

# More performance. More possibilities. More MELAtherm. More washer-disinfector than ever before.

Whether you have a practice or a medical care center: MELAtherm washer-disinfectors with two different washing chamber sizes were developed in Berlin down to the smallest detail for maximum performance – so that your ideas for a time-, space-, and cost-saving hygiene workflows can become reality.



AquaBoost for brilliant cleaning



XXL Smart-Touch Display



ProControl for batch approval



Integrated documentation interfaces



MELAG quality - made in Germany



Over 90 baskets, holders and adapters



Free service with over 1,300 trained technicians



Maintenance interval of 2 years or 1,000 cycles

## MELAtherm 10 Evolution

The practice-optimized solution for:

- ➔ **Limited space**  
due to space-saving storage of process agents in the device drawer
- ➔ **Low to medium reprocessing volumes**  
of instruments for up to 45 patients per batch in a basis basket with up to 12 flex segments



## MELAtherm 20

The XXL solution for:

- ➔ **Increased reprocessing volumes**  
of instruments for up to 90 patients per batch in two basis baskets with up to 24 flex segments
- ➔ **Wash tray systems**  
for reprocessing of up to 16 standard trays in the lower basket and up to 32 smaller trays in the upper basket
- ➔ **Highest standards of efficiency and convenience**  
with self-cleaning central filter and up to 63% better cleaning performance compared to MELAtherm 10 Evolution (based on ÖGSV guideline 3a).

Over 30,000 practices and clinics worldwide rely on MELAtherm:



*"MELAtherm impresses us every day! Even with 45 patients, the coordinated MELAG System Solution ensures efficiency, safety, and smooth processes at every step of reprocessing."*

The Linden Tree Dental Lounge  
Dunfermline, United Kingdom



*"Thanks to MELAtherm and the MELAG system, we have been able to significantly simplify our team's work processes and save valuable time."*

Clinic of Dr. Kateřina Jandová  
Prague, Czech Republic



*"MELAG is our reliable partner for practice hygiene. We have 100% confidence in their many years of experience and German-made quality."*

Clinic of Kampf and Vieler-Kampf  
Grebstein, Germany

MELAtherm 20

# All the magic of MELAtherm in XXL.

Designed for practices and clinics without limits: With an extra-large washing chamber, smart operating and documentation concepts, and the newly developed 3-arm rinsing system, MELAtherm 20 is ready for any challenge – today and in the future.

Whether with 230 V or 400 V, passiveDRY or activeDRY: With over 90 accessories and outstanding product highlights, MELAtherm 20 adapts flexibly to your requirements, enabling highly efficient reprocessing of instruments for up to 90 patients per load.

For instruments from  
up to 90 patients per cycle

160 liter chamber with 2 basis baskets  
and up to 24 flex segments

230 V or 400 V variant  
with activeDRY or passiveDRY



**Independent service with over 1,300 technicians**  
Whether maintenance or repair – our independent service network offers you freedom of choice and excellent value for money!



## XXL chamber concept:

Up to 24 flex segments in the lower basket and height-adjustable upper basket provide space for everything. And even more.



## AquaBoost:

Thanks to its powerful circulation pump and newly developed rinsing arm system, MELAtherm 20 achieves a 63% improvement in cleaning performance compared to MELAtherm 10 Evolution.\*

\* Based on ÖGSV guideline 3a



## Drying systems:

With activeDRY for active internal and external drying or passiveDRY with automatic door opening and steam condensation, you can achieve gentle drying and reliably protect your instruments from corrosion and damage.



## Smart-Touch:

With the extra-large touch display, everything is magically simple – simply magical: From program selection to documentation via network or USB.



## ProControl:

User authentication and batch approval directly on the device – this saves time, is legally compliant, and enables the immediate reuse of non-surgical instruments. (please comply with national standards)



## MediaGuard: (optional)

The specially designed storage box keeps things tidy and reliably protects your cabinets from process agents.



## Cleanfinity Pro: (optional)

Maximum instrument protection, minimum effort – the new self-cleaning central filter in the bottom of the washing chamber provides ideal value retention for your hollow-body instruments and saves valuable working time.



### Active drying:

activeDRY external and internal drying guarantees ideal protection for your instruments against corrosion and damage.



### Process agents intake:

Integration of the process media and the dosing module creates space, makes work easier, and helps to avoid errors.



### Practice-optimized washing chamber:

The compact washing chamber concept with versatile insert baskets saves time, reduces costs and retains valuable resources.



### Smart-Touch:

Getting started, selecting programs, and operating the washer-disinfector has never been easier with Smart-Touch. Now even more intuitive with video tutorials covering all relevant operating questions.



### ProControl:

User authentication and batch approval directly on the device – this saves time, is legally compliant, and enables the immediate reuse of non-surgical instruments. (please comply with national standards)



### Documentation interfaces:

With an integrated CF card slot and two network interfaces, there are no additional costs for documentation.



### AquaBoost:

The new powerful circulation pump ensures up to 44%\* better cleaning results and higher capacities: Reprocess up to 23 handpieces and turbines per cycle!

\* Compared to the previous model MELAtherm 10



## MELAtherm 10 Evolution

# Compact by Design. Efficient for Nature.

No space? No problem! This space-saving wonder with a practice-optimized washing chamber and integrated process agents exceeds expectations. MELAtherm 10 Evolution delivers outstanding cleaning and drying results in the smallest of spaces – and that with resource-saving cycle costs of just 1.50 €.

Whether it's the Smart-Touch Display with integrated video tutorials, ProControl approval software or the activeDRY drying system, MELAtherm 10 Evolution stands for performance with ease: So that your time belongs to your patients again.

For instruments from up to 45 patients per cycle

84 liter chamber with one basis basket and up to 12 flex segments

Available as 230 V or 400 V version with activeDRY drying



**Independent service with over 1,300 technicians**  
Whether maintenance or repair – our independent service network offers you freedom of choice and excellent value for money!

# More variety. More you.

## Baskets and adapters for all specialties.

Every field of medicine is unique – just like your instrument reprocessing requirements. Whether you work in dentistry, ENT, gynecology, podiatry, veterinary medicine, ophthalmology or other medical fields, with over 90 baskets and adapters, we can put together a customized loading pattern that is perfectly suited to you and your workflow.

You can find a variety of loading patterns with detailed item lists on our website:  
[www.melag.com/en/melatherm%20loading%20pattern](http://www.melag.com/en/melatherm%20loading%20pattern)



**NEW:** MELAtherm 20 with loading trolley for up to 8 DIN sieves



### Dental practice

In just one cycle, MELAtherm 10 Evolution can reprocess instruments for over 45 patients, and MELAtherm 20 for over 90 patients in no time.

- ✓ Reprocessing of universal suction cannulas placed upright in the instrument basket
- ✓ Safe adaptation of ultrasonic scaler tips with torque wrench



### Gynecological practice

Up to 32 speculums in MELAtherm 10 Evolution and up to 45 speculums in MELAtherm 20 are available for use after cleaning and disinfection – supplemented by flexible baskets for additional instruments.



### ENT practice

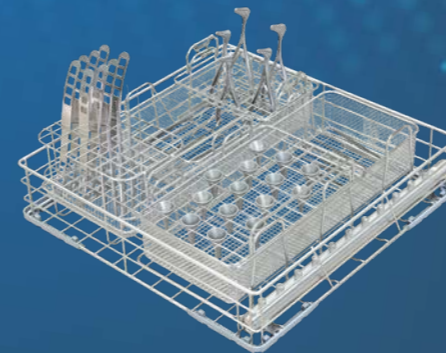
Whether 192 ear specula in MELAtherm 10 Evolution or over 400 ear specula in MELAtherm 20 – in just approx. 60 minutes, they are fully reprocessed and ready for use, along with other ENT instruments.



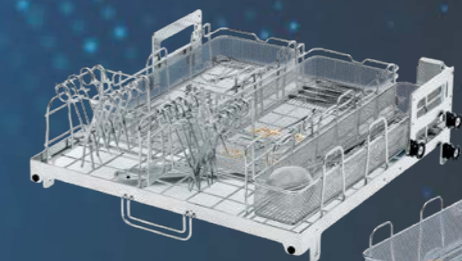
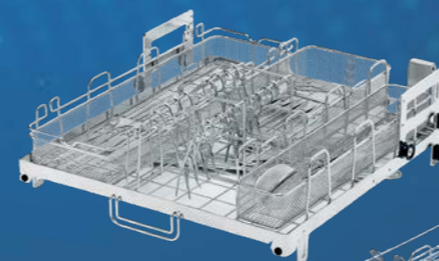
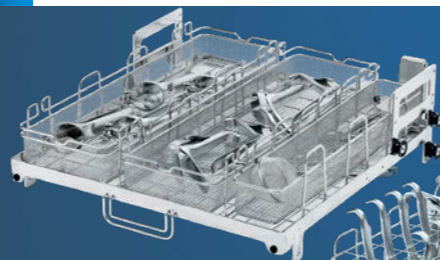
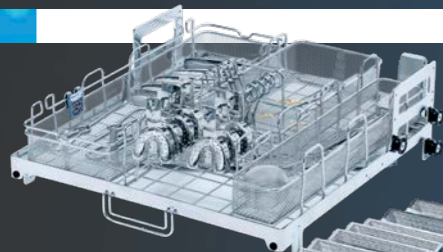
### Medical practices

Whether surgery, orthopedics, urology, dermatology, or general medicine – with flexible baskets, tube connections, and adapters for hollow instruments, MELAtherm adapts precisely to the requirements of your specialty.

MELAtherm 10 Evolution



MELAtherm 20



Further loading patterns for OMFS and orthodontics can be found at [www.melag.com/en](http://www.melag.com/en)

Further loading patterns for podiatry, veterinary medicine, ophthalmology, and outpatient surgery centers can be found at [www.melag.com/en](http://www.melag.com/en)

## Accessories for MELAtherm

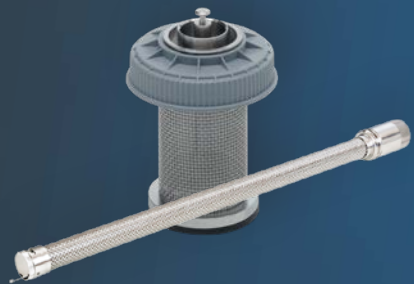
# As flexible as your needs.

Find the right accessories for you. And your MELAtherm. Our specially developed solutions take your instrument reprocessing to the next level: For greater safety, maximum efficiency, and noticeable convenience.



### MELAcontrol Wash-Check

Keep an eye on cleaning performance at all times: The coordinated MELAcontrol Wash-Check enables simple, routine checking of the cleaning results for your instruments – in the basis basket or on the injector rail in accordance with DIN EN ISO 15883-5.



### Cleanfinity – Cleanable central filters

Our cleanable central filters not only protect sensitive hollow instruments, but also your budget and the environment. Whether as Cleanfinity with cleaning indicator in the MELAtherm 10 Evolution or as Cleanfinity Pro as a self-cleaning central filter in the MELAtherm 20 – Cleanfinity is the smart solution for a clean future.



### MEtherm process agents

The chemistry is right: Our MEtherm process agents – cleaner, neutralizer, and rinse aid – are specially developed for MELAtherm. The result: Uncompromising cleanliness, optimal drying and minimal consumption. This allows you to combine maximum hygiene with sustainable cost-effectiveness.



### MELAdem 53

The water treatment systems perform the final rinse with demineralized water to protect and maintain the instruments. The powerful MELAdem 53 even allows additional devices to be connected in the reprocessing room.



### MELAstora

Increase the efficiency and quality of the reprocessing process: MELAstora Trays and MELAstora Boxes offer remarkable time savings and a reduction in practice waste through standardization.



### MELAG regeneration salt

This high-purity salt is optimally matched to the MELAtherm water softening system. The coarse grain size ensures uniform solubility, protects the washer-disinfector from limescale deposits, and supports long-lasting cleaning performance.



### Care Oil Spray

With this fully synthetic care oil for transmission and joint instruments, everything runs like clockwork: Targeted care after machine cleaning and disinfection protects your instruments, reduces wear and tear, and prevents costly repairs.



# The MELAstore System Workflow becomes WOWflow.

Would you like to optimize your hygiene process even further? Then increase the efficiency and quality of your instrument reprocessing with MELAstore. The wash trays and sterilization containers are available in various sizes and are perfectly matched to each other and to MELAG washer-disinfectors and autoclaves. See for yourself how this can boost your workflow:



**Time savings:**  
Save up to 30 minutes per reprocessing cycle compared to packaging individual instruments



**Environmental protection:**  
Reduce material costs and practice waste through significantly lower packaging consumption



**Process optimization:**  
Increase the level of standardization and thus quality management



**Safety:**  
Secure fixation with silicone bars protects the practice team and instruments



## Your reprocessing process – reimagined with MELAstore:



Cleaning and disinfection of MELAstore Trays with MELAG washer-disinfectors



Packaging with MELAstore Box



Sterilization with MELAG autoclaves



Documentation and approval with MELAtrace



Marking with MELAprint 80

# Compare us with other manufacturers Keep your eyes open when buying washer-disinfectors.

We are confident in the quality, features and ease of maintenance of our washer-disinfectors. To help you see this for yourself, the following checklist summarizes the most important product features. This makes it easy for you to compare our devices with products from other manufacturers.

Product highlights	Your benefits	MELAtherm 10 Evolution	MELAtherm 20 with passiveDRY	MELAtherm 20 with activeDRY	Other manufacturer
		activeDRY	passiveDRY	activeDRY	
<b>Drying</b>	➔ With activeDRY internal and external drying or passiveDRY automatic door opening, you can reliably protect your valuable instruments from corrosion and damage – for maximum safety and a significantly longer service life for your instruments.	✓	✓	✓	
<b>Intuitive touch concept</b>	➔ Sharp, bright, sensational: The large touch display guides you through all functions with ease – clear, understandable, and reliable from the very first moment.	✓	✓	✓	
<b>Process agents intake</b>	➔ More space, more structure: The combination of process media agents storage and dosing module creates lasting order in the reprocessing room.	✓ in process media drawer	✓ in optional MediaGuard storage box	✓	
<b>Liquid process media agents</b>	➔ The dosing of liquid process media ensures optimal cleaning and drying results and is fully reproducible.	✓	✓	✓	
<b>Documentation interfaces</b>	➔ Thanks to the connections for network and documentation media, legally compliant protocol transmission is possible without any additional software – simple and reliable.	✓ CF card or network	✓ USB flash drive or network	✓	
<b>Batch approval directly on the device</b>	➔ Paperless user authentication and batch approval enable non-surgical instruments to be reused immediately (please comply with national standards).	✓	✓	✓	
<b>Practice-optimized reprocessing chamber</b>	➔ In combination with the versatile accessories, the chamber concept enables time-saving and resource-saving workflows. One load in the MELAtherm 10 corresponds to approximately two practice autoclave loads, and one load in the MELAtherm 20 corresponds to approximately four practice autoclave loads.	✓ Instruments for up to 45 patients	✓ Instruments for up to 90 patients	✓	
<b>Cleanable central filter</b>	➔ An economical solution for maximum safety: Cleanfinity ensures reliable reprocessing of hollow instruments and can be cleaned directly in the practice without any additional costs if necessary.	✓ Cleanfinity with replacement filter indicator	✓ Self-cleaning Cleanfinity Pro filter	✓	
<b>Reprocessing of ultrasonic scaler tips</b>	➔ Only the adaptation of ultrasonic scaler tips with torque wrenches guarantees maximum user safety and prevents accidents at work.	✓	✓	✓	
<b>AquaBoost Technology</b>	➔ The high flushing pressure of AquaBoost Technology not only enables additional handpieces to be processed in the Injector Basket Flex 1, but also significantly improves the cleaning result.	✓ +44% compared to its predecessor, MELAtherm 10	✓ +63% compared to MELAtherm 10 Evolution	✓	
<b>Monitoring of the rinsing pressure and the rinsing arms</b>	➔ Monitoring these parameters ensures process reliability.	✓	✓	✓	
<b>Service-friendly maintenance cycles</b>	➔ Maintenance cycles of 24 months or 1,000 cycles and an independent service concept reduce ongoing operating costs.	✓	✓	✓	
<b>Satisfied users in your region</b>	➔ Over 30,000 practices already rely on MELAtherm – discover their experiences at: <a href="http://www.melag.com/en/blog-global?tab=success-stories">www.melag.com/en/blog-global?tab=success-stories</a>	✓	✓	✓	



If you already use a MELAG autoclave in your practice, purchasing a MELAG washer-disinfector is particularly worthwhile due to the significant savings in joint maintenance and validation!

## Technical data

# Facts and figures at a glance.

MELAG washer-disinfectors are available in 400-volt (three-phase current, DTA) and 230-volt (alternating current, DTB) connection variants. If the installation requirements allow for a 400-volt connection, the DTA variant is recommended due to its significantly shorter operating times.

Programs MELAtherm 20*		
	400 V	230 V
Universal	42 min	Information to follow
Universal+	56 min	Information to follow
Intensive	59 min	Information to follow
Ophthalmology	59 min	Information to follow

Programs MELAtherm 10 Evolution*		
	400 V / DTA	230 V / DTB
Quick	37 min	57 min
Universal	42 min	63 min
Intensive	54 min	67 min
Ophthalmology	43 min	63 min

\* All programs plus passive drying through automatic door opening and steam condensation after the end of the program, or active drying, which can be interrupted at any time.

	MELAtherm 20		MELAtherm 10 Evolution
	passiveDRY	activeDRY	activeDRY
Device dimensions (W × H × D)	59.8 × 81.8 (83.6**) × 73 cm Unit fits under a 60 cm countertop		59.8 × 81.8 (83.6**) × 67.8 cm Unit fits under a 60 cm countertop
Chamber room (W × H × D)	160 liters / 50.9 × 51.1 × 53.9 cm		84 liters / 46.5 × 40.5 × 44.8 cm
Weight	74 kg (82 kg**)	Information to follow	80 kg (86 kg**) (106 kg with basis cabinet)
Electrical connection 400 V / DTA	3 N AC 318-415 V, 50 Hz, 3 × 16 A		3 N AC 400 V, 50 Hz, 3 × 16 A
Power consumption 400 V / DTA	9,1 kW		10,2 kW
Electrical connection 230 V / DTB	AC 220 –240 V, 50 Hz, 1 × 16 A		AC 220 –240 V, 50 Hz, 1 × 16 A
Power consumption 230 V / DTB	2.9 kW		3.3 kW
Dimensions MELAdem® 53 / 53 C	Ø 24 × 57 cm (61.5 cm including connection elbow) / Ø 24 × 44.3 cm (48.8 cm)		

\*\* With cover plate

Product	MELAtherm 20 passiveDRY 400 V	MELAtherm 20 activeDRY 400 V	MELAtherm 20 passiveDRY 230 V	MELAtherm 20 activeDRY 230 V	MELAtherm 10 Evolution activeDRY 400 V	MELAtherm 10 Evolution activeDRY 230 V
Art. no.	ME20022A50	ME20022A50T	ME20022B50	ME20022B50T	ME20020	ME20021
Availability	immediately	immediately	Summer 2026	Summer 2026	immediately	immediately

Availability outside the EU may vary due to regulatory approvals.



**Save paper, protect the environment:**

To reduce paper consumption, we provide user documentation for our products in electronic form in our download center. For more information, visit [www.melag.com/en](http://www.melag.com/en)